

**[A75 Forum](#)**

Find a Solution for any Support problem Easily  
www.Fixya.com

**[Hydraulic Cylinder Repair](#)**

Cylinder repair bench  
Disassembly and torque fixture  
www.ms-d.com

**[Mac Recycling - Mac Parts](#)**

Buy parts for your Mac Lowest Price Guaranteed!  
www.macrecycling.com

**[laptop screw](#)**

laptop screw with warranty All laptop parts. Buy Now !  
www.pchub.com



**How to dismantle Toshiba Satellite A70/A75. Repair laptop yourself. Disassembly manual with pictures.**

This guide will help you to dismantle, disassemble Toshiba Satellite A70 and A75 laptop. If you experience an overheating problem, you can use the guide to clean up the cooling module and remove lint from the heatsink. Also you can use the guide if you want to remove and repair the system board and resolder the DC-IN jack (known issue with loosing power). The guide will cover removing the following laptop parts: battery, memory modules, wireless card, hard drive, DVD drive, modem card, top cover assembly, display/LCD assembly, keyboard, system board, speakers, CPU, heatsink, CPU fans.

**[Few things to know before you start taking your laptop apart](#)**

**[Toshiba laptop overheating problem](#)**

**[Toshiba Satellite A75 failed power jack workaround](#)**

 **Click on any picture to enlarge.**

If you have a suggestion or a question about Toshiba Satellite A70 or A75 disassembly, you can leave your comment here:

**[Comments for Toshiba Satellite A70 and A75 notebook disassembly](#)**



**STEP 1**

Turn the unit upside down.  
Remove screws securing the Wi-Fi card cover and the hard drive cover.  
Remove the Wi-Fi card cover and the hard drive cover.



**STEP 2**

Loosen the metal brace screw. Remove the metal brace and the wireless card.  
Remove the hard drive.  
Remove the battery.

**[Best Deal at PCNation](#)**

**Toshiba (PA3477U-1BTI (PA3477U1BTM Bluetooth Wireless**



The Toshiba USB Adapter with Bluetooth 2.0+EDR Capability adds Bluetooth Deals

**Best Deals from Name Brand Merchants**  
**PCNation**  
Free FedEx 2-3 Day Featured Store

In Stock at PCNation

**Best Price at:**  
**[PCNation - \\$92.85](#)**



### STEP 3

Remove one screw securing the DVD drive.



### STEP 4

Remove the DVD drive.



### STEP 5

That's my favorite :)  
Remove all screw on the bottom.



### STEP 6

Turn the laptop right side up.  
Insert a thin object under the securing strip and lift it up.  
Be careful, it may be very tight.



### STEP 7

Remove the securing strip.



### STEP 8

Remove two screws securing the keyboard.  
Press on the lock in the center to release the keyboard.

[Ads by Google](#)

[Advertise on this site](#)



### [Spa Pump](#)

Information on Spa Pumps. All you need to know.  
[www.eSpaPump.info](http://www.eSpaPump.info)

[Page1](#) :: [Page2](#) :: [Page3](#) :: [Find another model](#)

[Home Page](#) :: [Disassembly Guides](#)

Ads by Yahoo!

**Blackberry®  
8800**

Sleek design w/  
premium finish.  
Thinnest BlackBerry  
yet. Learn more.  
BlackBerry8800.com

**Award-Winning  
Panasonic**

Durable. Reliable.  
Wireless. Panasonic  
Toughbook  
notebook PCs  
www.panasonic.com

**M-Audio,  
Midiman on Sale  
at**

Honest People with  
Low Prices. Get our  
Big Free 350 Page  
Catalog.  
fullcompass.com



**STEP 9**

Lift the keyboard off the  
base.



**STEP 10**

Disconnect the keyboard  
cable from the system  
board and remove the  
keyboard.



**STEP 11**

Remove two screws  
securing the the hinges  
on the back of the  
computer.



**STEP 12**

Turn the computer right  
side up.  
Remove the Wi-Fi cable  
from the route.  
Disconnect the LCD cable  
on system board.  
Remove two screws  
securing the hinges.

**Best Deal at  
Spare Parts  
Warehouse**

**Toshiba  
(P000366710)  
Keyboard**



Keyboard,  
Connectivity:  
Wireless

Deals

**Best Deals from  
Name Brand  
Merchants**

**Featured Store**

In Stock, New at  
Spare Parts  
Warehouse

**Compare Prices:**

[Spare Parts  
Warehouse -](#)

[Compu-Net  
Solution - \\$53.00](#)

[Notebook  
Parts.com -](#)



### STEP 13

Lift the display assembly off the base.



### STEP 14

Remove 6 screw securing the top cover.  
Disconnect the speaker cables on the system board.  
Disconnect the flat touchpad cable on the system board.



### STEP 15

Using a guitar pick, carefully separate the top cover from the base.



### STEP 16

Lift the top cover off the base.



## STEP 17

Do not forget to remove  
"dummy" PC card.

[Page1](#) :: [Page2](#) :: [Page3](#) :: [Back to Home Page](#)

[Main Page](#) :: [Home Page](#)

[Laptop Repair Help](#) :: [Notebook Disassembly Discussion](#) :: [Ask Laptop Freak](#)

### Taking apart laptop base:

[Toshiba Satellite 1200](#) :: [Toshiba Satellite 1415](#) :: [Toshiba Satellite 1800](#) :: [Toshiba Satellite1805](#) :: [Toshiba Satellite1905](#) ::  
[Toshiba Satellite 5105](#) :: [Toshiba Satellite5205](#) :: [Toshiba Satellite Pro 6100](#) :: [Toshiba Satellite A10](#) :: [Toshiba Satellite Pro M10](#) :: [Toshiba Satellite A15](#) :: [Toshiba Satellite Pro M15](#) :: [Toshiba Satellite A25](#) :: [Toshiba Satellite A35](#) :: [Toshiba Satellite A55](#) :: [Toshiba Satellite A60](#) :: [Toshiba Satellite A65](#) :: [Toshiba Satellite A70](#) :: [Toshiba Satellite A75](#) :: [Toshiba Satellite A85](#) :: [Toshiba Satellite A105](#) :: [Toshiba Satellite L25](#) :: [Toshiba Satellite M35](#) :: [Toshiba Satellite M35X](#) :: [Toshiba Satellite M45](#) :: [Toshiba Satellite M55](#) :: [Toshiba Satellite M65](#) :: [Toshiba Satellite M105](#) :: [Toshiba Satellite P10](#) :: [Toshiba Satellite P15](#) :: [Toshiba Satellite P25](#) :: [Toshiba Satellite P30](#) :: [Toshiba Satellite P35](#) :: [Toshiba Tecra TE2100](#) :: [Toshiba Tecra 9100](#) :: [Toshiba Tecra A1](#) :: [Toshiba Tecra A2](#) :: [Toshiba Tecra M2](#) :: [Toshiba Tecra M3](#) :: [Toshiba Tecra S1](#) :: [Toshiba Tecra S2](#) :: [Toshiba Tecra S3](#) :: [Toshiba Portege 3500 Tablet PC](#) :: [Toshiba Portege 4010](#) :: [Toshiba Portege A100](#) :: [Toshiba Portege R100](#) :: [Toshiba Portege M205 Tablet PC](#) :: [Toshiba Qosmio F15](#)

### Taking apart laptop display assembly:

[Toshiba Satellite 1415](#) :: [Toshiba Satellite 2435](#) :: [Toshiba Satellite A20](#) :: [Toshiba Satellite A45](#) :: [Toshiba Satellite A65](#) ::  
[Toshiba Satellite A105](#) :: [Toshiba Satellite M35X](#) :: [Toshiba Satellite M45](#) :: [Toshiba Satellite M55](#) :: [Toshiba Satellite P25](#) ::  
[Toshiba Tecra 8100](#) :: [Toshiba Tecra A3](#) :: [Toshiba Portege M200 Tablet PC](#)

**tech.irisvista.com**

**TOSHIBA SATELLITE  
A70/A75  
Dismantle laptop yourself**



Please Support the Website. You can make a donation to Irisvista.com with your debit or credit card via secure PayPal. You can donate any amount and pay in any currency supported by PayPal.

**Page1 :: Page2 :: Page3 :: Back to Home Page**

**Ads by Google**

[Toshiba Laptop](#)

[Toshiba Portege](#)

[Toshiba Tecra S1](#)

[Toshiba Projector](#)

[Ads by Goooooogle](#)

[Toshiba Spare Parts](#)

AGParts stocks over a million dollars of Toshiba spare parts.  
[www.agpartsworldwide.cc](http://www.agpartsworldwide.cc)

[Laptop Manual Download](#)

Laptop User's & Service Manuals Instant Download for all Manuals  
[www.7manuals.com](http://www.7manuals.com)

[Toshiba Laptop](#)

Find Valuable Information About Toshiba Laptop Here  
[Toshiba.MostPopularSite](#)

[Toshiba Satellite](#)

The Top Recommended Sites for Toshiba Satellite  
[Electronics.SearchInfo30](#)



**STEP 18**

Remove four hex screws on the back of the base.



**STEP 19**

Remove two screws securing the system board to the base.



**STEP 20**

Carefully remove the system board from the base.



**STEP 21**

Remove two screws securing the modem card.  
Remove the modem card.



**STEP 22**

Remove four screws securing the fans.

[Best Deal at NotebookParts.com](#)

**Toshiba Celeron, 2.4 GHz (P000383520)**



Processor Upgrade, KB Cache Memory, For PC Platforms

Deals

**Best Deals from Name Brand Merchants**



**Featured Store**

In Stock, Usually ships same day if orde... at NotebookParts.com

**Best Price at:**

[NotebookParts.com](#) - **\$129.95**





### STEP 23

Hold the fans and turn the system board back over.  
Disconnect the CPU fan cables on the system board.  
Remove fans.



### STEP 24

Remove four screws with springs securing the cooling module.  
Carefully lift the cooling module off the CPU.



### STEP 25

Turn the CPU lock to unlock position.  
Carefully lift off the CPU.



### STEP 26

DONE!!!

[Ads by Goooooogle](#)

[Advertise on this site](#)



**[Averatec Laptop Parts](#)**

Laptop batteries, keyboards adapters and more.  
[www.notebookparts.com](http://www.notebookparts.com)

**[Toshiba Laptop Repair](#)**

Find the Best Links on Toshiba Laptop Repair  
[www.linx-best.com](http://www.linx-best.com)

[Page1](#) :: [Page2](#) :: [Page3](#) :: [Back to Home Page](#)

[Main Page](#) :: [Home Page](#)

[Laptop Repair Help](#) :: [Notebook Disassembly Discussion](#) :: [Ask Laptop Freak](#)

**Taking apart laptop base:**

[Toshiba Satellite 1200](#) :: [Toshiba Satellite 1415](#) :: [Toshiba Satellite 1800](#) :: [Toshiba Satellite1805](#) :: [Toshiba Satellite1905](#) :: [Toshiba Satellite 5105](#) :: [Toshiba Satellite5205](#) :: [Toshiba Satellite Pro 6100](#) :: [Toshiba Satellite A10](#) :: [Toshiba Satellite Pro M10](#) :: [Toshiba Satellite A15](#) :: [Toshiba Satellite Pro M15](#) :: [Toshiba Satellite A25](#) :: [Toshiba Satellite A35](#) :: [Toshiba Satellite A55](#) :: [Toshiba Satellite A60](#) :: [Toshiba Satellite A65](#) :: [Toshiba Satellite A70](#) :: [Toshiba Satellite A75](#) :: [Toshiba Satellite A85](#) :: [Toshiba Satellite A105](#) :: [Toshiba Satellite L25](#) :: [Toshiba Satellite M35](#) :: [Toshiba Satellite M35X](#) :: [Toshiba Satellite M45](#) :: [Toshiba Satellite M55](#) :: [Toshiba Satellite M65](#) :: [Toshiba Satellite M105](#) :: [Toshiba Satellite P10](#) :: [Toshiba Satellite P15](#) :: [Toshiba Satellite P25](#) :: [Toshiba Satellite P30](#) :: [Toshiba Satellite P35](#) :: [Toshiba Tecra TE2100](#) :: [Toshiba Tecra 9100](#) :: [Toshiba Tecra A1](#) :: [Toshiba Tecra A2](#) :: [Toshiba Tecra M2](#) :: [Toshiba Tecra M3](#) :: [Toshiba Tecra S1](#) :: [Toshiba Tecra S2](#) :: [Toshiba Tecra S3](#) :: [Toshiba Portege 3500 Tablet PC](#) :: [Toshiba Portege 4010](#) :: [Toshiba Portege A100](#) :: [Toshiba Portege R100](#) :: [Toshiba Portege M205 Tablet PC](#) :: [Toshiba Qosmio F15](#)

**Taking apart laptop display assembly:**

[Toshiba Satellite 1415](#) :: [Toshiba Satellite 2435](#) :: [Toshiba Satellite A20](#) :: [Toshiba Satellite A45](#) :: [Toshiba Satellite A65](#) :: [Toshiba Satellite A105](#) :: [Toshiba Satellite M35X](#) :: [Toshiba Satellite M45](#) :: [Toshiba Satellite M55](#) :: [Toshiba Satellite P25](#) :: [Toshiba Tecra 8100](#) :: [Toshiba Tecra A3](#) :: [Toshiba Portege M200 Tablet PC](#)







ATTENTION:  
HANDLE WITH CARE  
DO NOT TOUCH THE BOARD  
OR COMPONENTS  
UNLESS NECESSARY



CAUTION  
DO NOT TOUCH THE BOARD  
OR COMPONENTS  
UNLESS NECESSARY

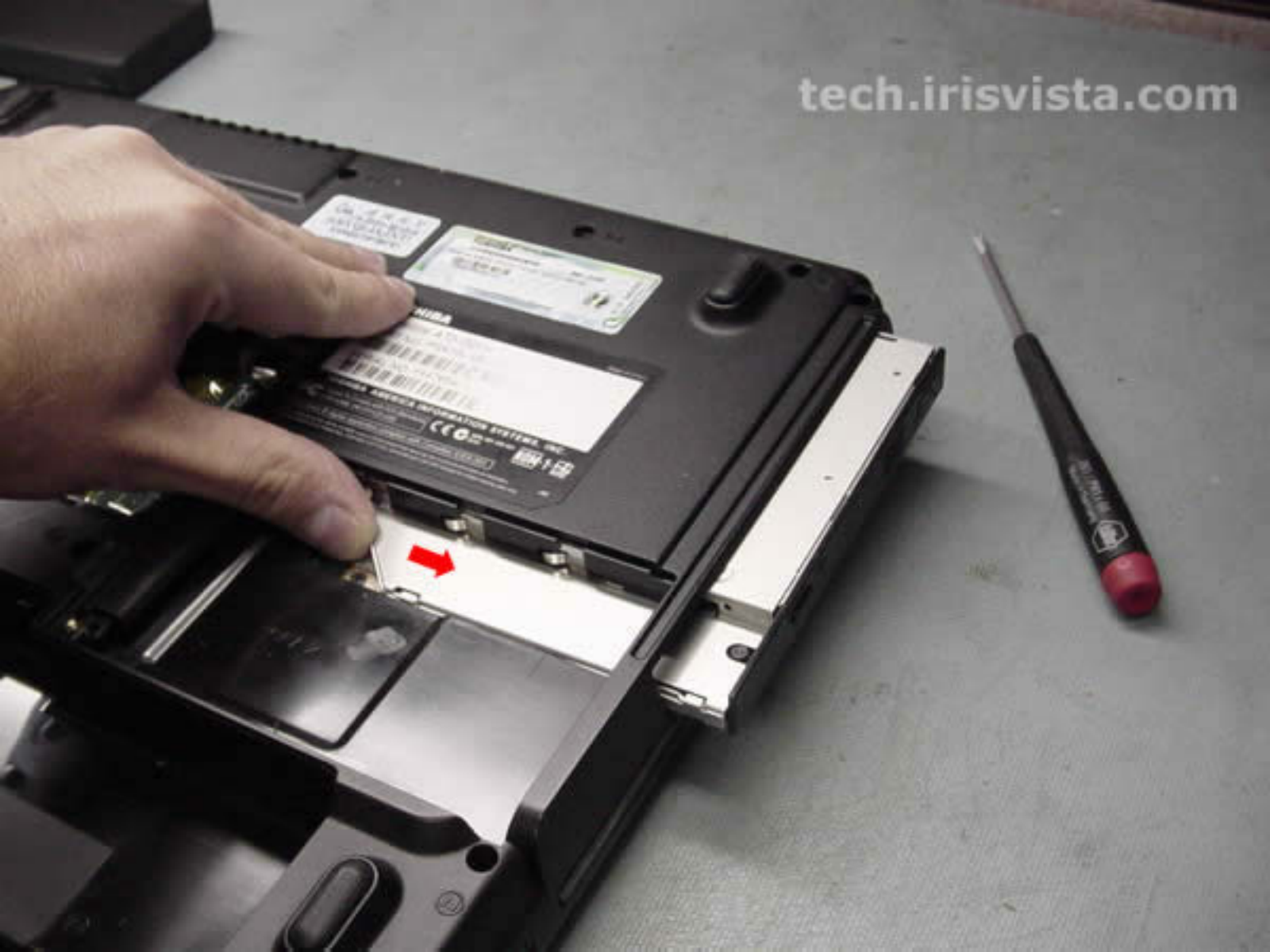
WARRANTY  
TOSHIBA  
SERIAL NO. 11111111111111111111  
DATE OF PURCHASE 01/01/2011

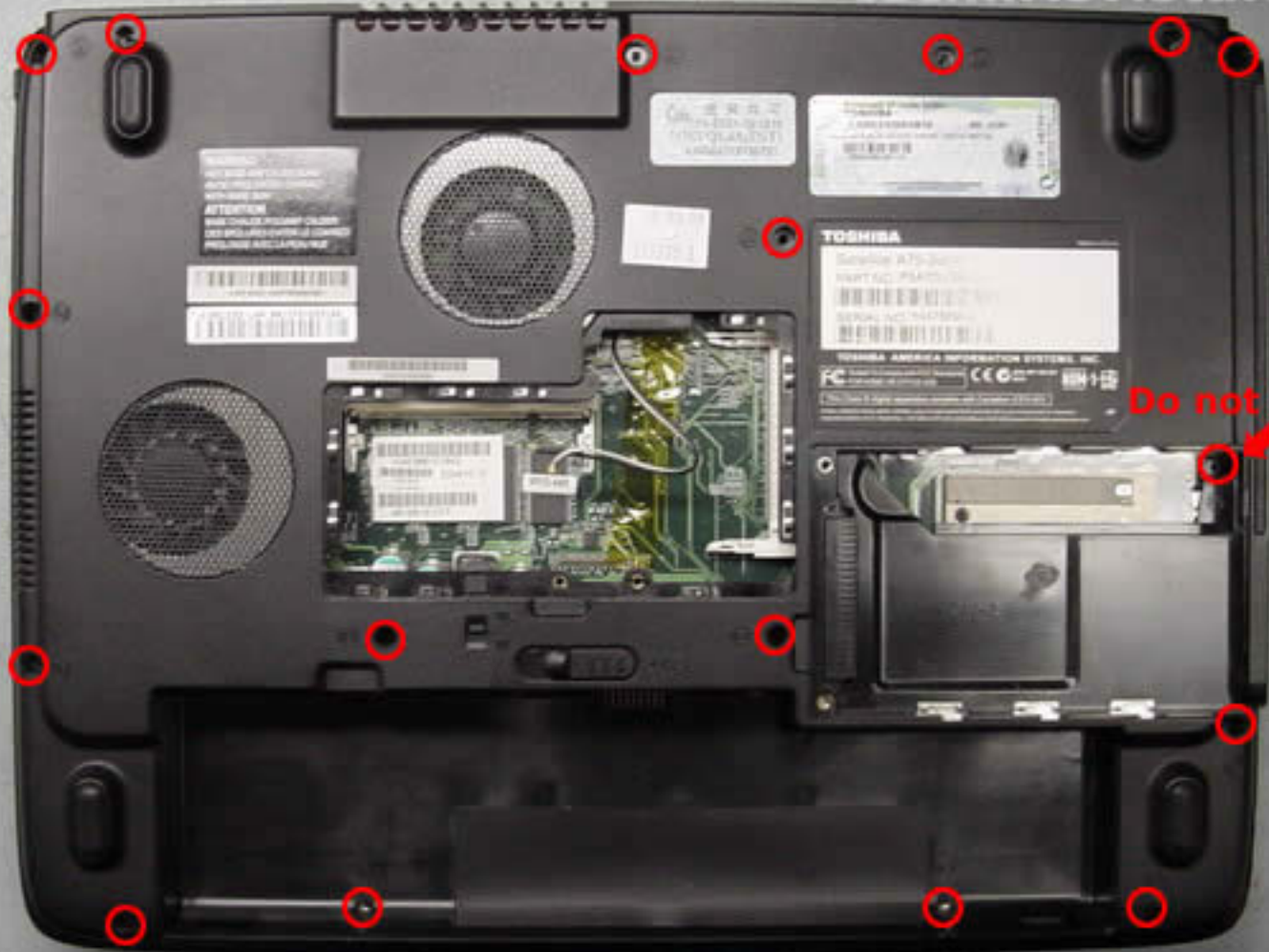
CAUTION  
DO NOT TOUCH THE BOARD  
OR COMPONENTS  
UNLESS NECESSARY



**TOSHIBA**  
Satellite A70-200  
PART NO. P9470-01-000  
SERIAL NO. T74700-1  
TOSHIBA AMERICA INFORMATION SYSTEMS, INC.  
FC Power Technology America's Best Kept Secret  
© 2011 Toshiba America Electronic Components, Inc.  
TOSHIBA AND THE TOSHIBA LOGO ARE TRADEMARKS OF TOSHIBA CORPORATION.







Do not forget









TOSHIBA

tech.irisvista.com



tech.irisvista.com







TOSHIBA

tech.irisvista.com



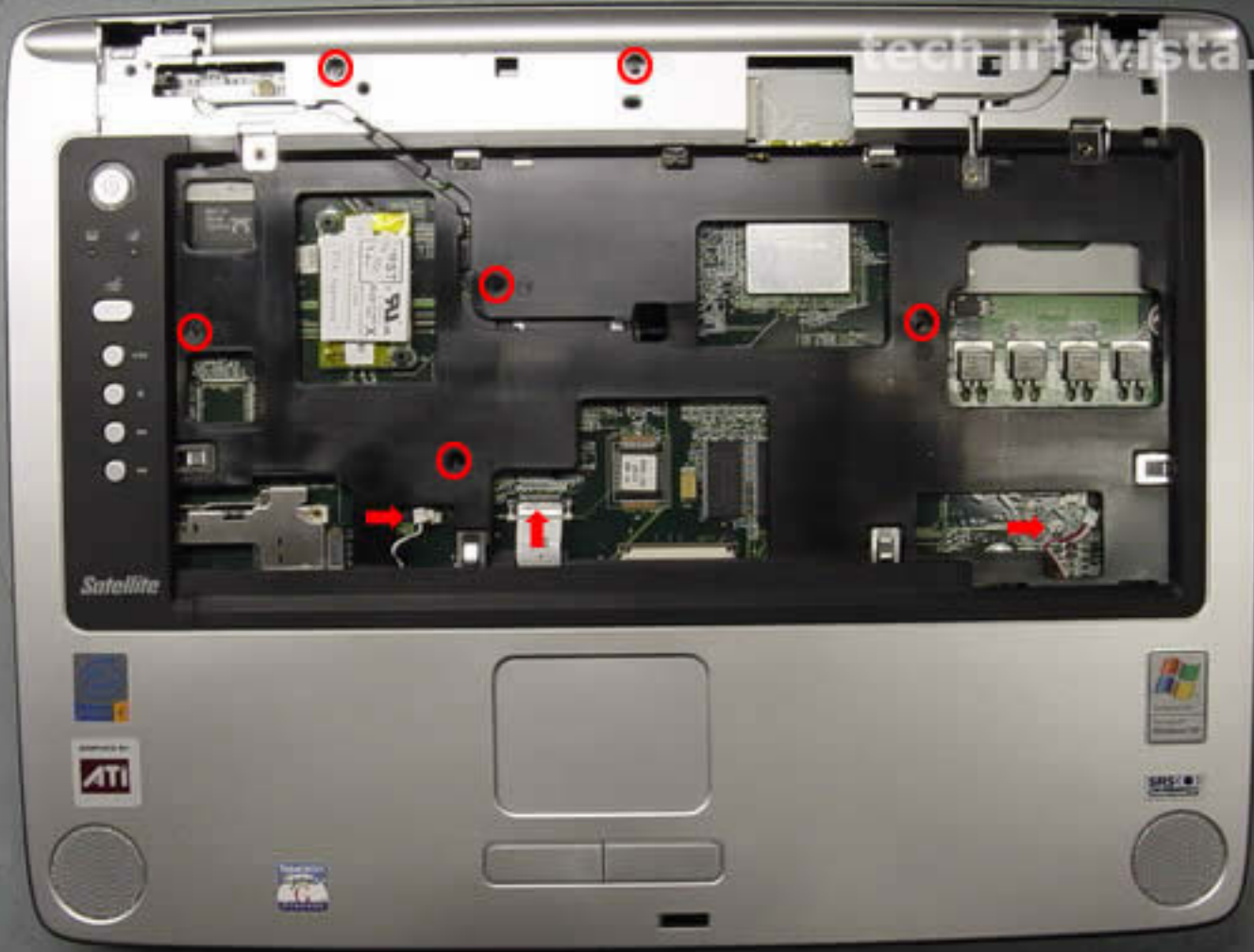
Satellite



TOSHIBA

Satellite

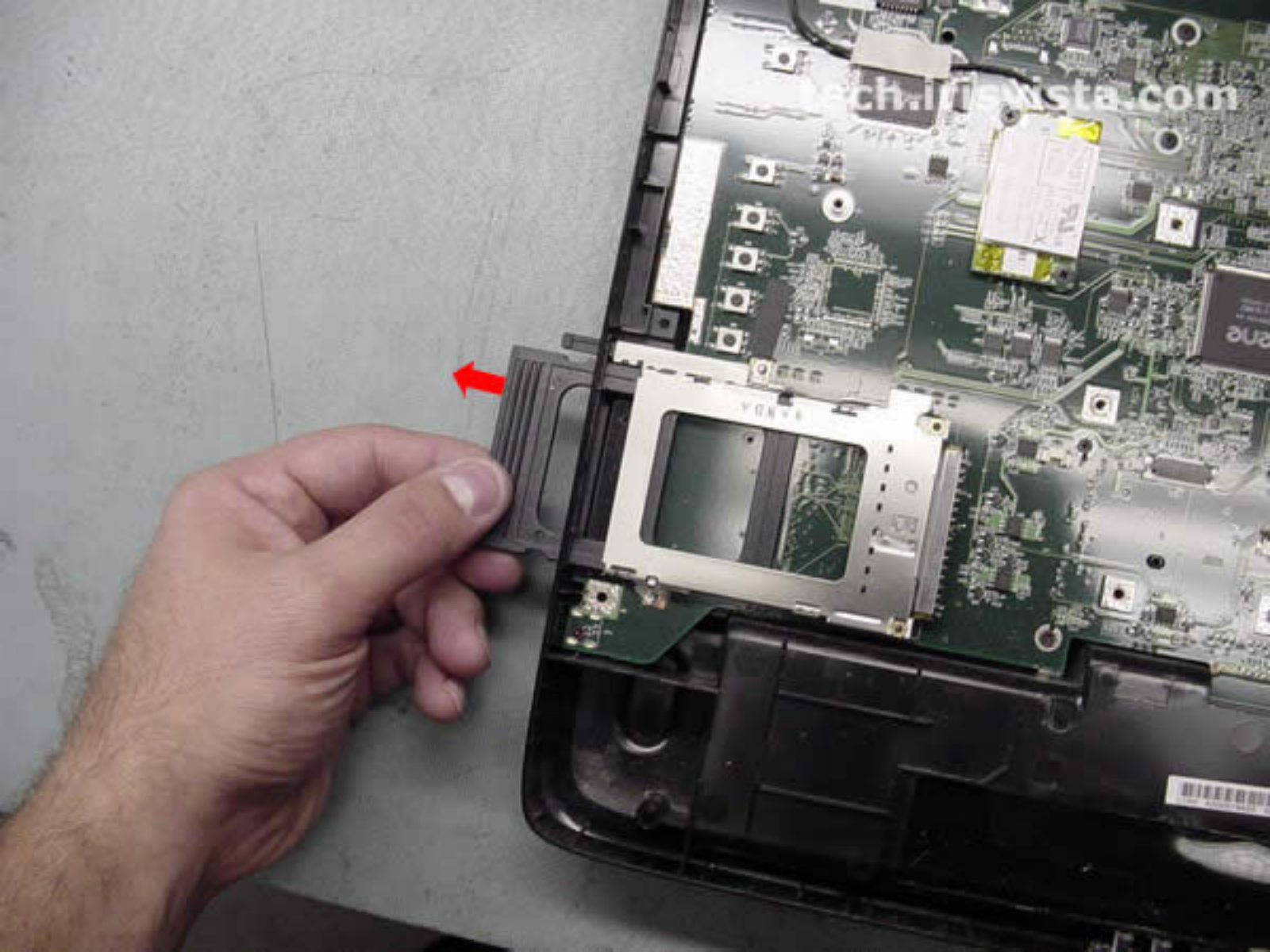




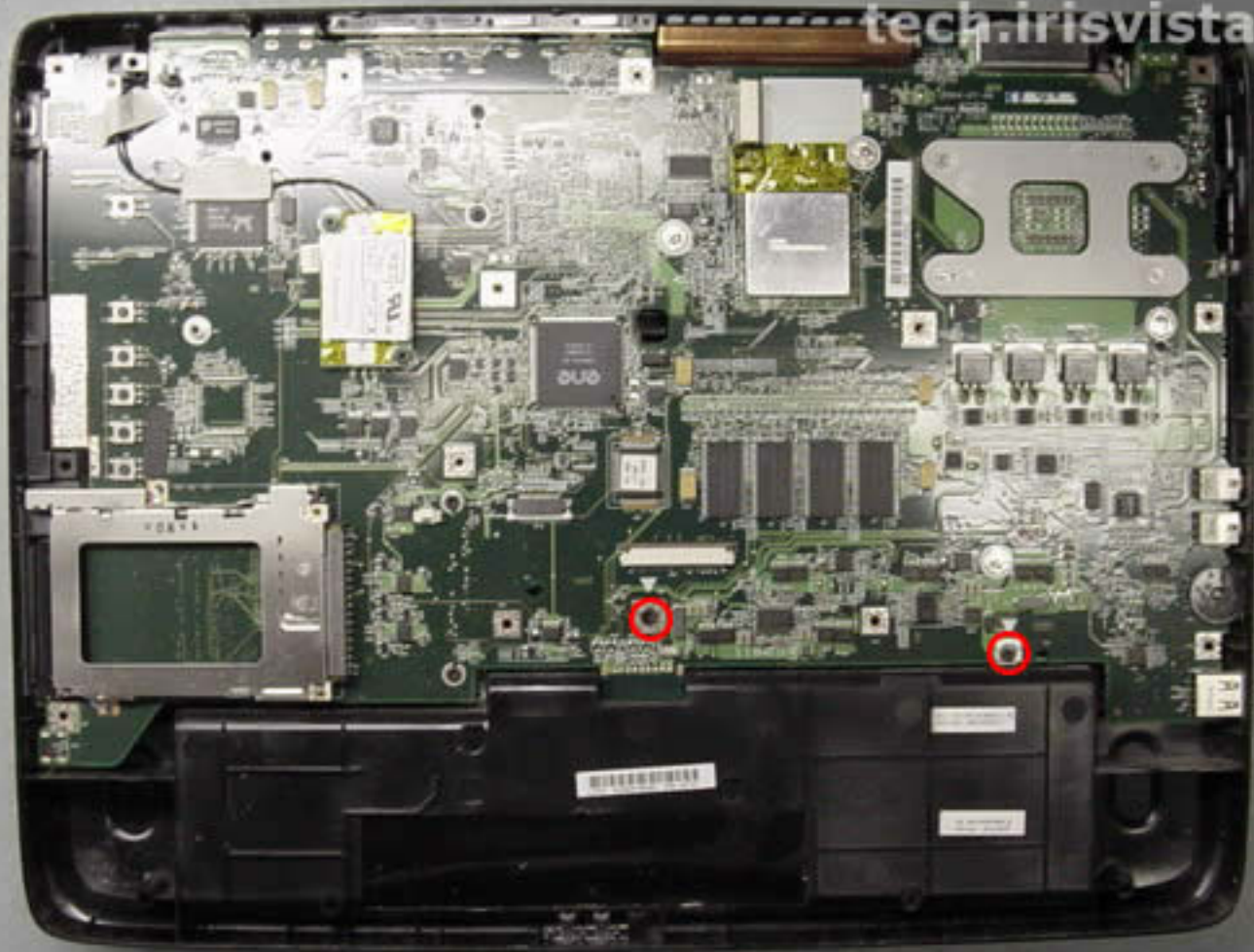




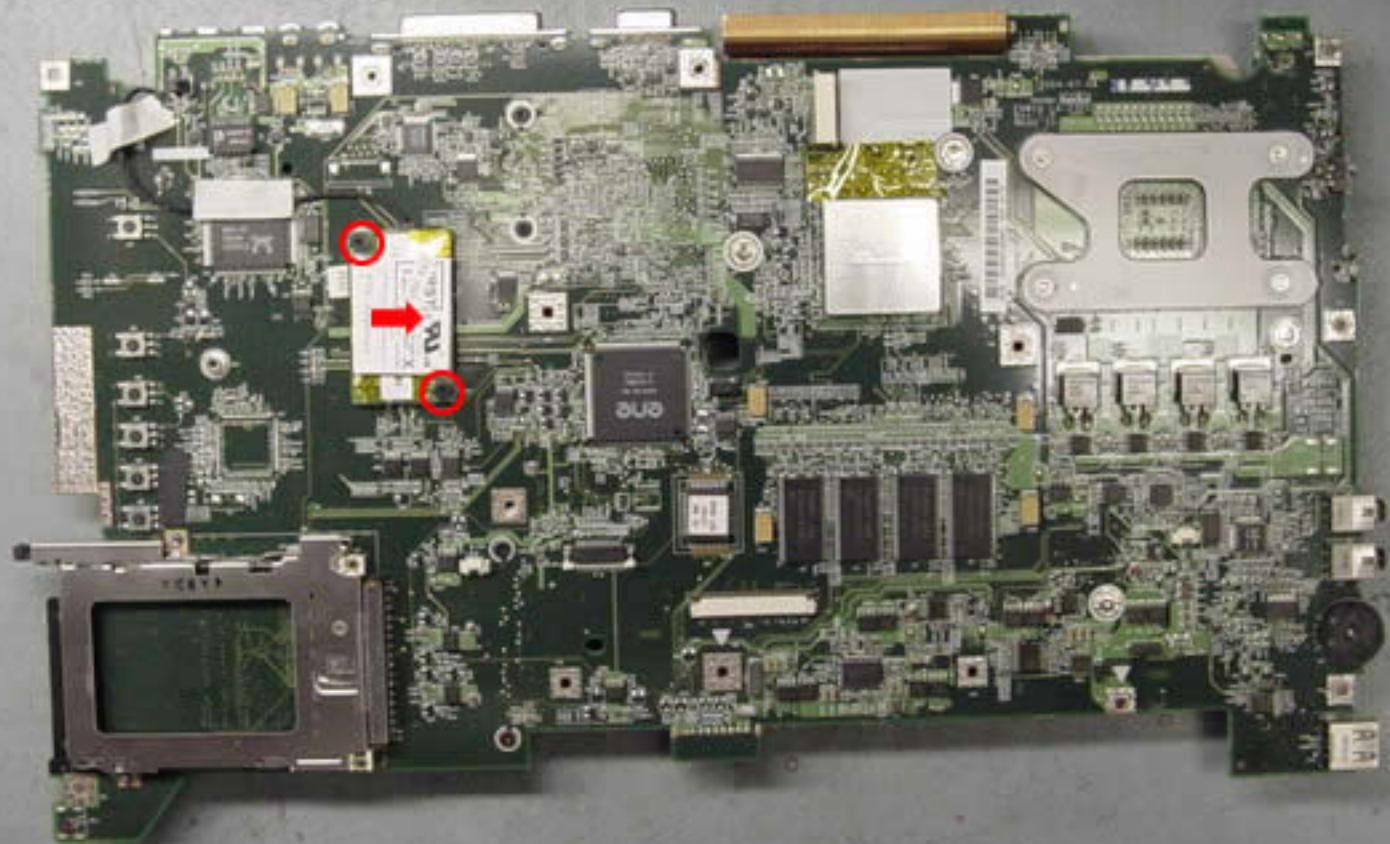


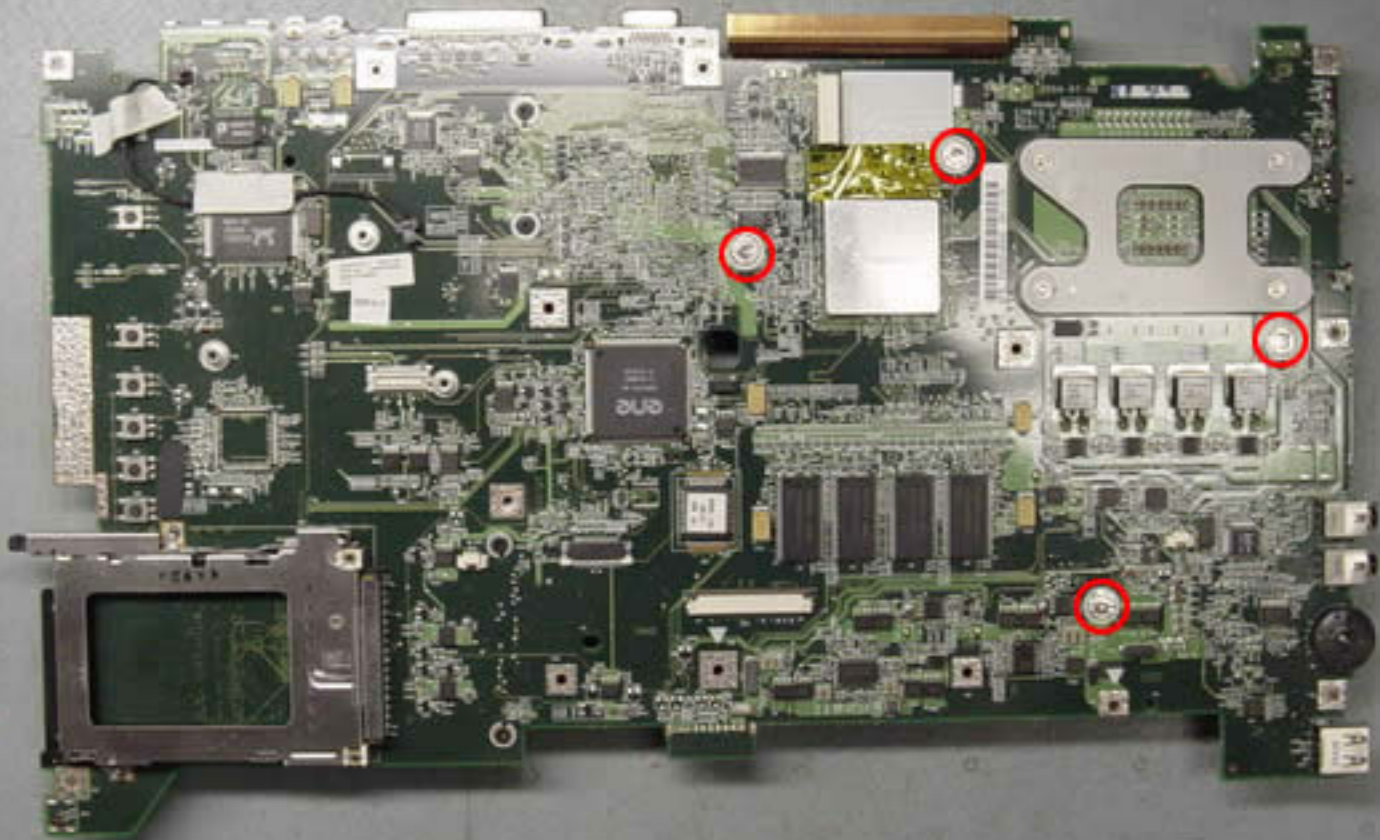




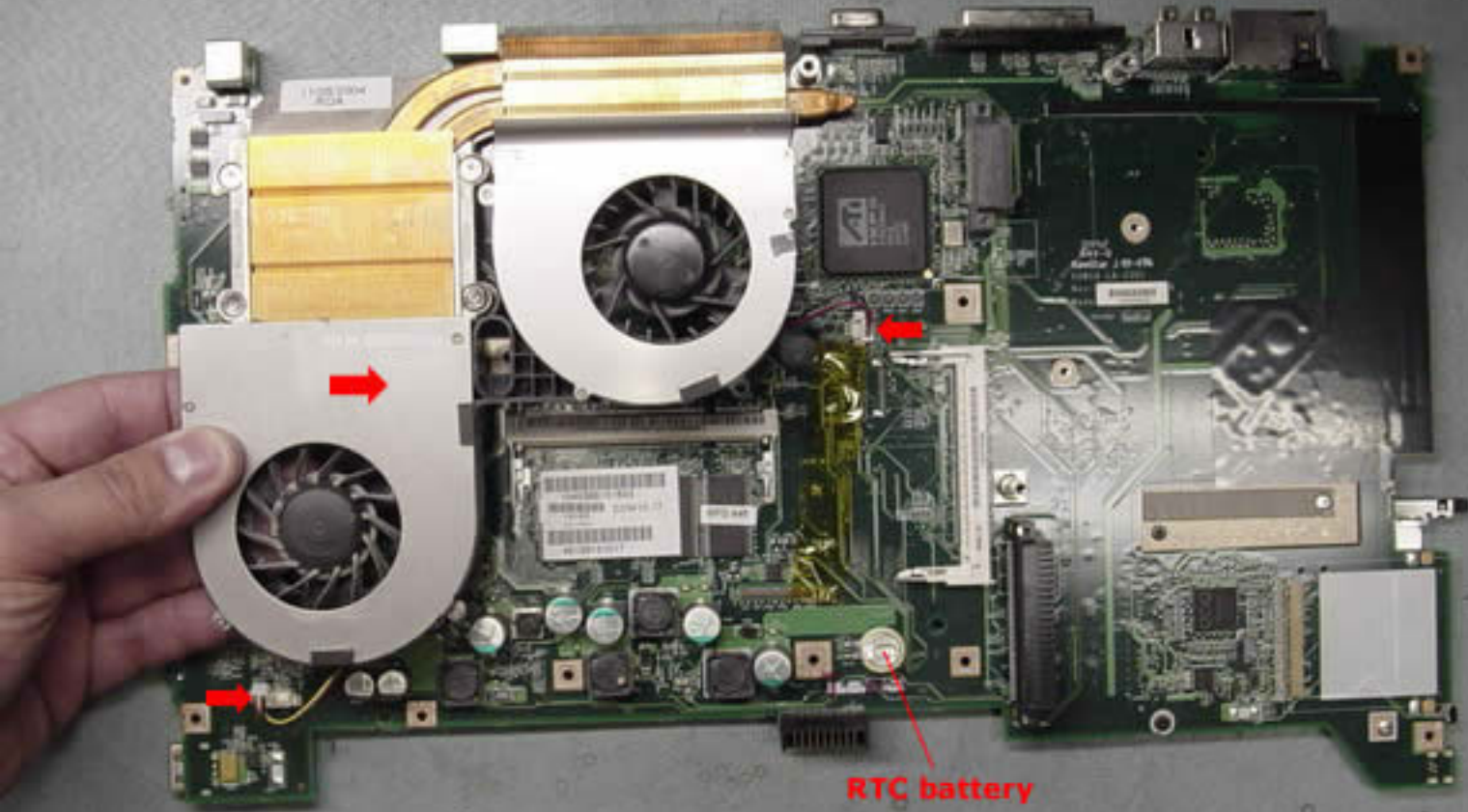












→

→

→

RTC battery

